

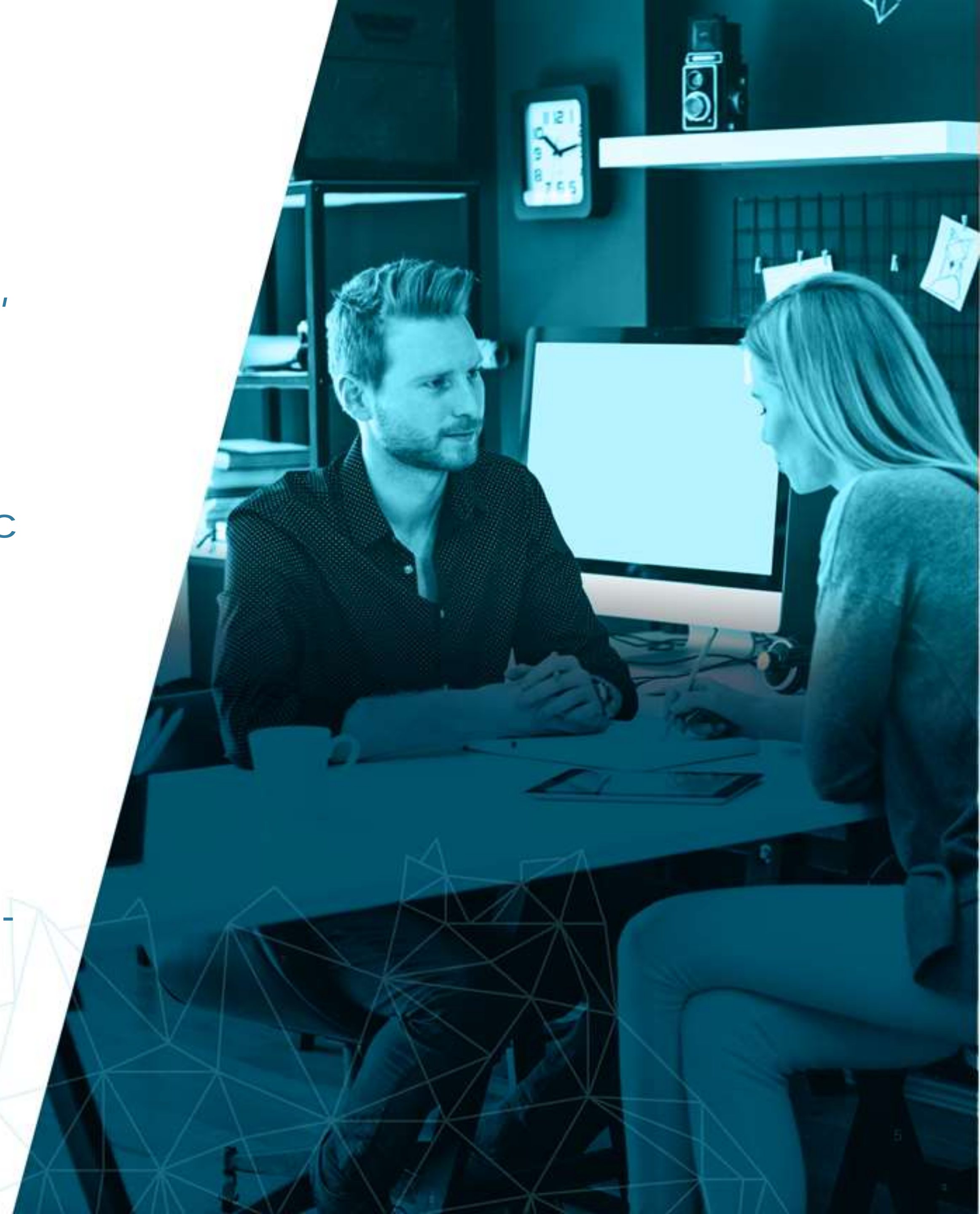
How dynamic working can help solve Greater **Manchester's congestion** problem.

Anna Collins
Head of Sustainable Journeys
TfGM

10th July 2019

OUR PURPOSE

- We exist to keep Greater Manchester moving, working and growing and to make life in the region better.
- Our ambition is for world-class connections that support long-term, sustainable economic growth and access to opportunity for all.
- Greater Manchester is growing. That means more jobs, more people and more demand on our public transport networks.
- Greater Manchester is changing. Our ambitious plans will build an integrated, high-capacity transport system that serves the region better.



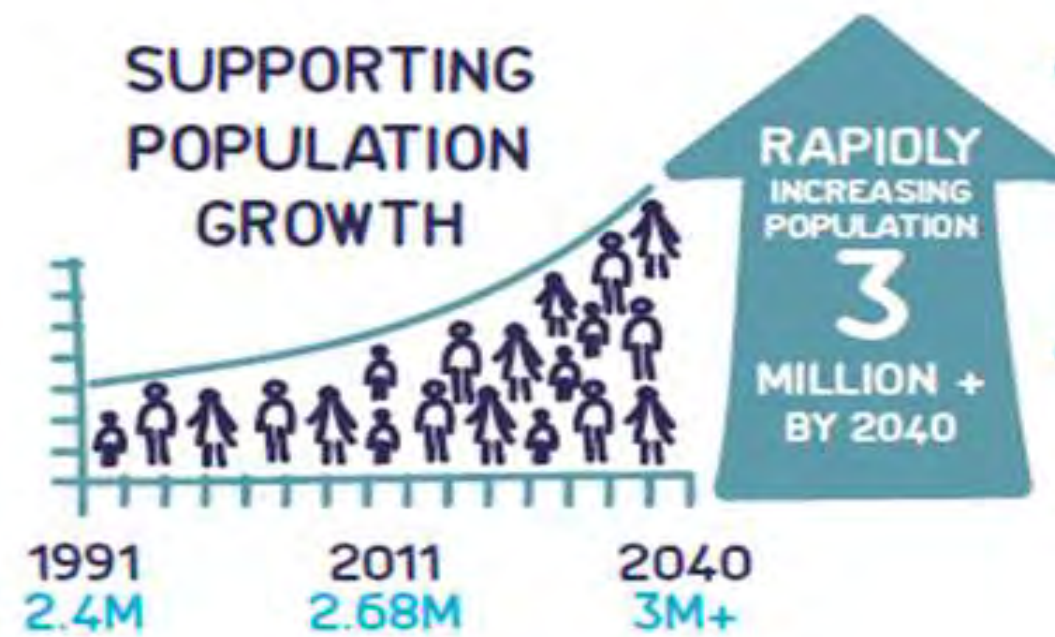
The challenges of a growing city region

SUPPORTING SUSTAINABLE ECONOMIC GROWTH

AN INCREASE IN EMPLOYMENT



SUPPORTING POPULATION GROWTH



REQUIRING AT LEAST 227,000 MORE HOMES



+600,000
MORE TRIPS ON OUR
TRANSPORT NETWORKS
EVERYDAY
BY 2035

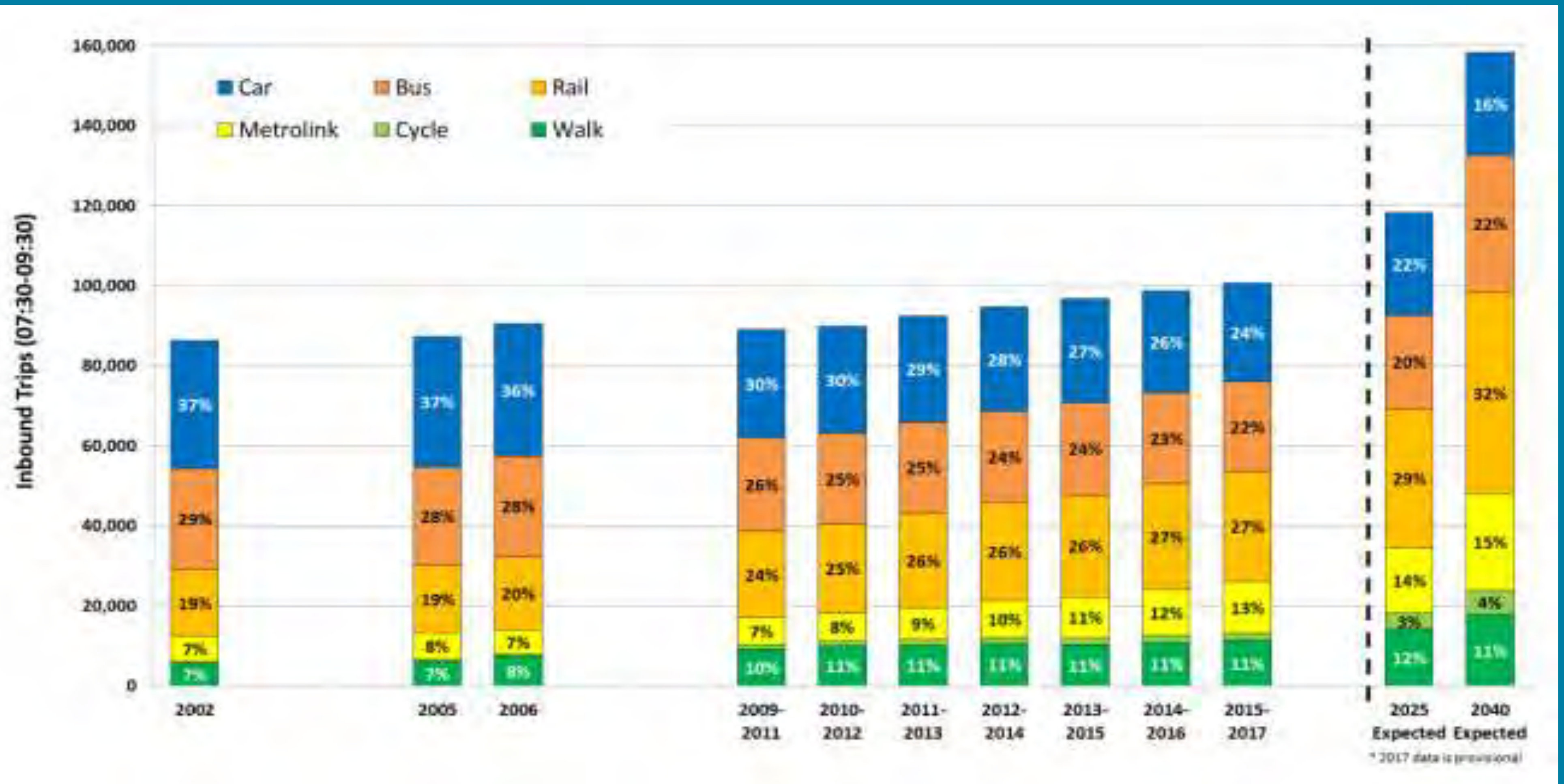


2011 60,000 residents
2040 100,000 residents

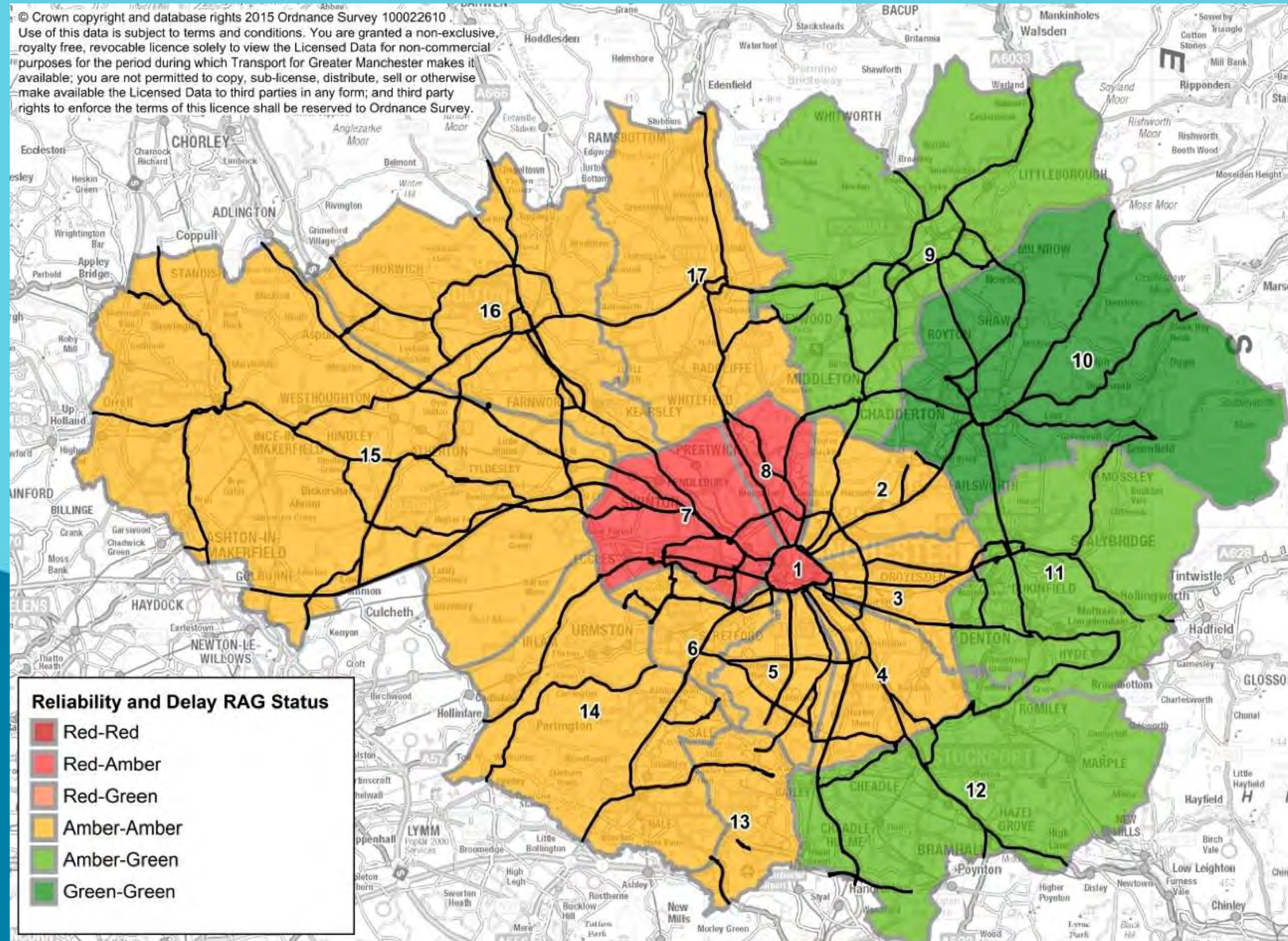


2017 162,000 jobs
2040 270,000 jobs

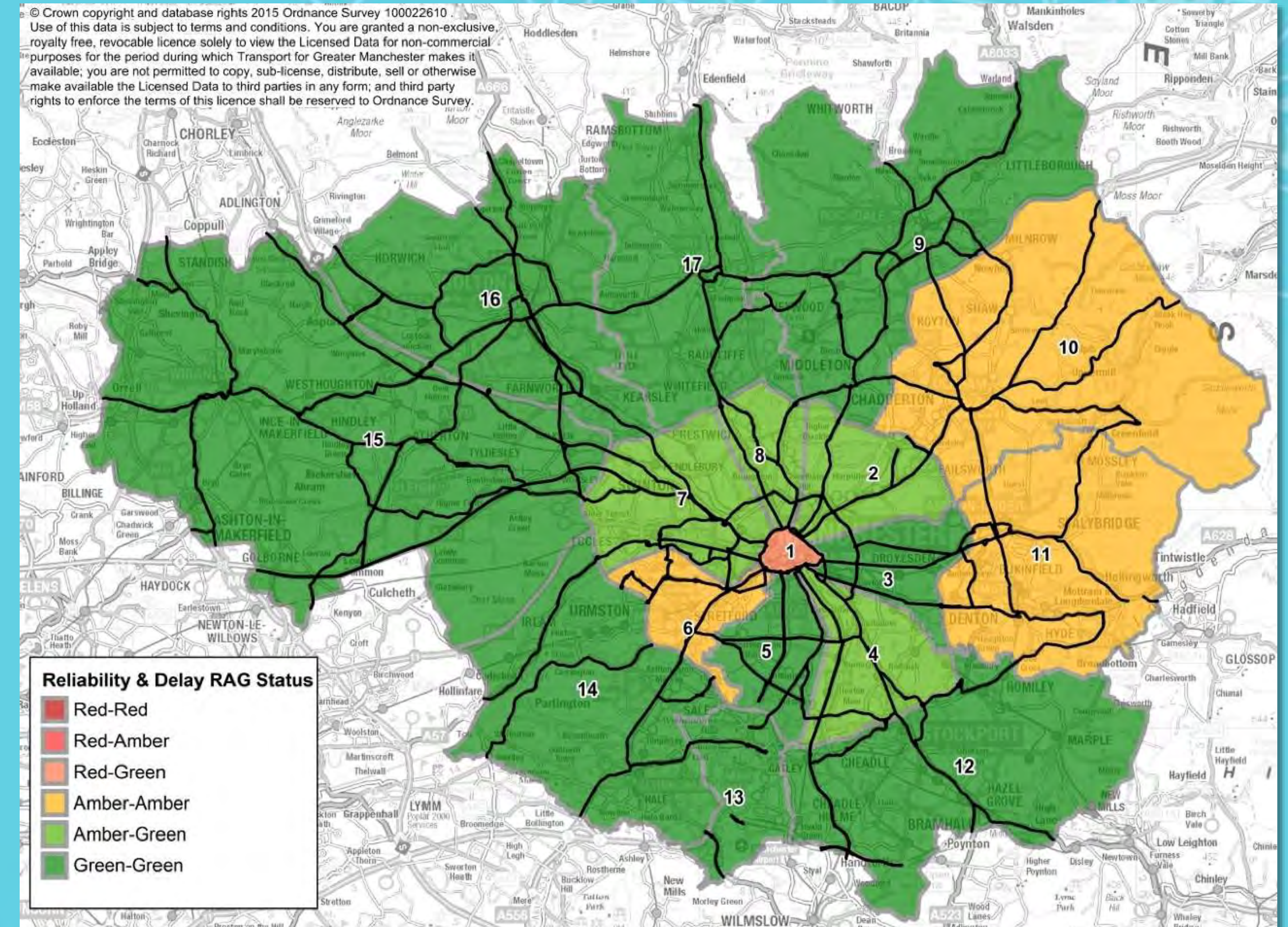
The challenges of a growing city region



SMALL CHANGES, BIG IMPACT - THE HALF-TERM EFFECT



26th October to 1st November 2018
Oldham and Tameside Half Term

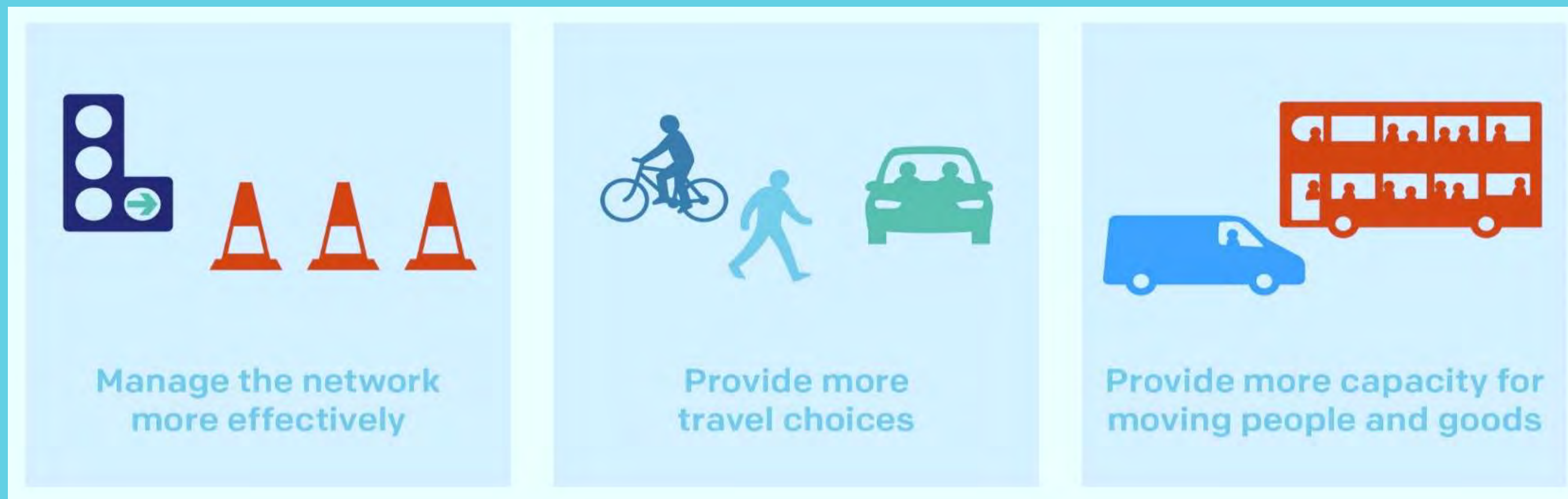


19th to 25th October 2018
Half Term Except Tameside and Oldham

CONGESTION DEAL

We will:

- Improve the management of the transport network
- Increase the capacity of our transport network
- Give people more choice about how and when they travel



Championing dynamic working



Improving dynamic ways of working through IT systems

Top-down support and trust from managers

SIEMENS



Informal conversations to retain long-serving staff members

Campaign endorsements



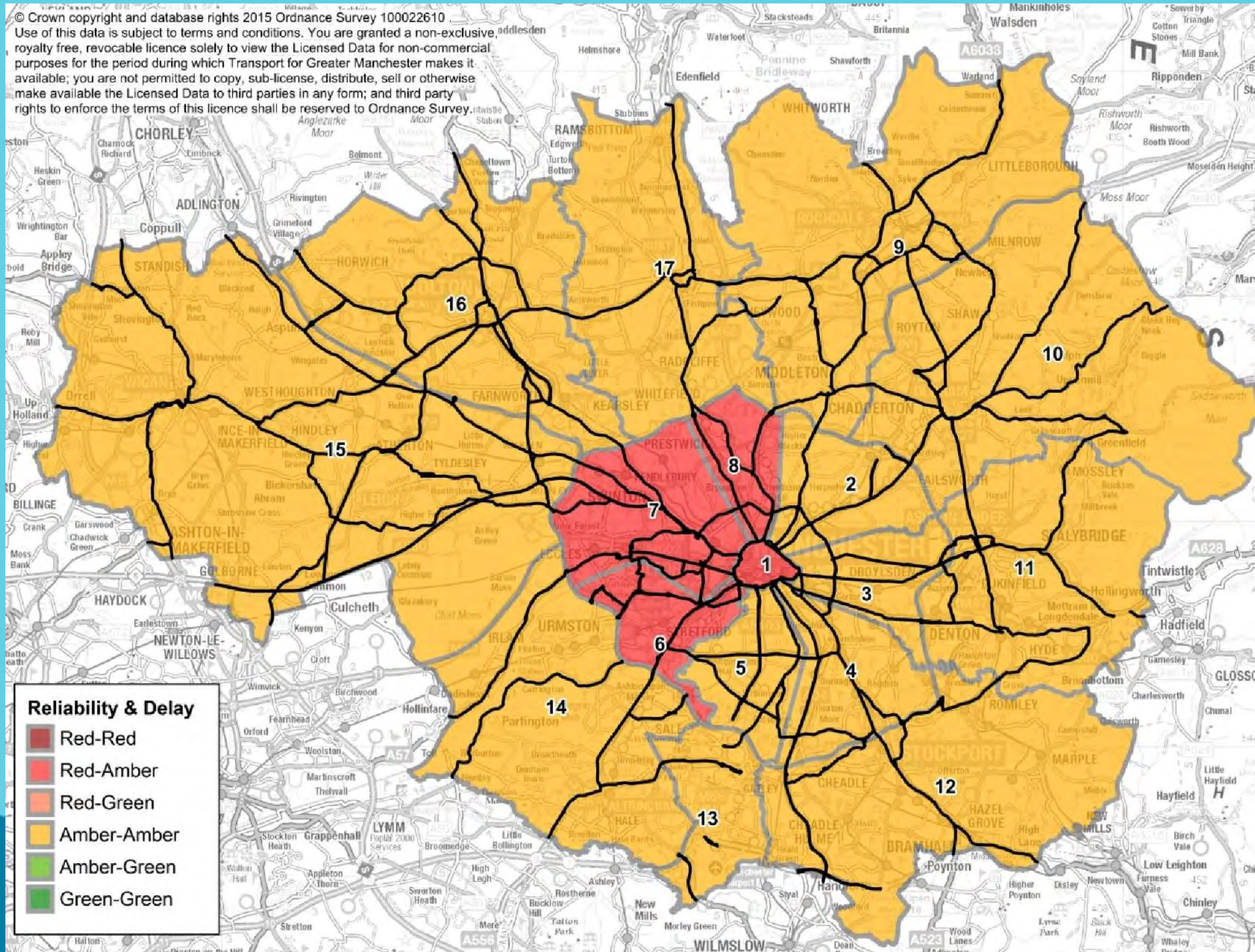
Greater Manchester
Chamber of Commerce

Connect. Communicate. Create.



finding flexible work for experienced professionals

MSIRR

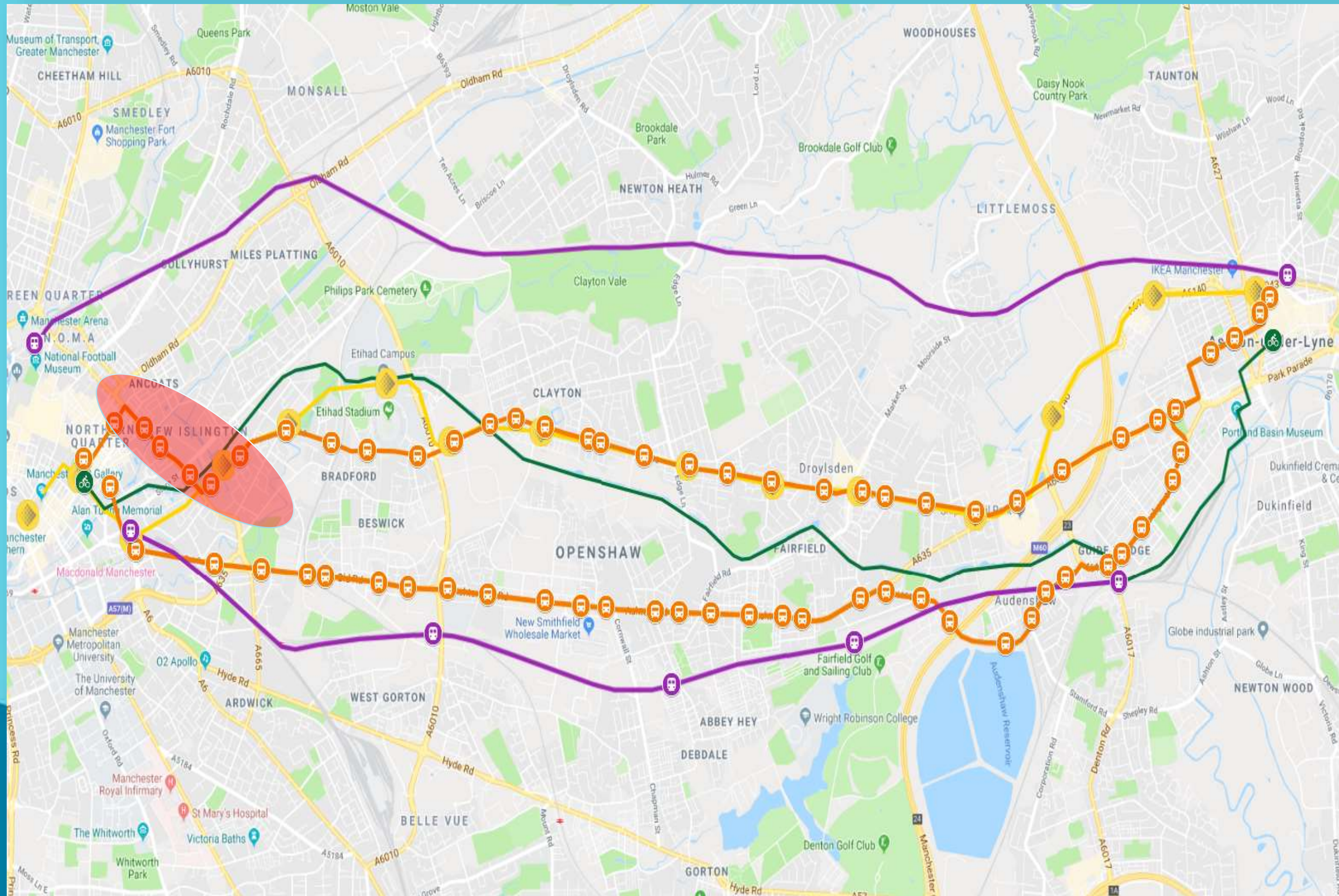


11th January to 17th January 2019.

Term time with roadworks embargo lifted and traffic management for MSIRR works in place.

- Manchester and Salford Inner Relief Route
- £15 million improvement project
- Carried out by Salford City Council and Manchester City Council
- With funding from the Government's Local Growth Fund
- The works will improve capacity by 20%
- One major impact has been on commuters
- Many have been forced to re-think their commutes
- And this is putting pressure on businesses to think about how they allow their employees to work

Great Ancoats street



We're encouraging commuters to:

Reduce their commute

- Work from home
- Work remotely

Retime their commute

- Vary their start/finish times

Re-route their commute

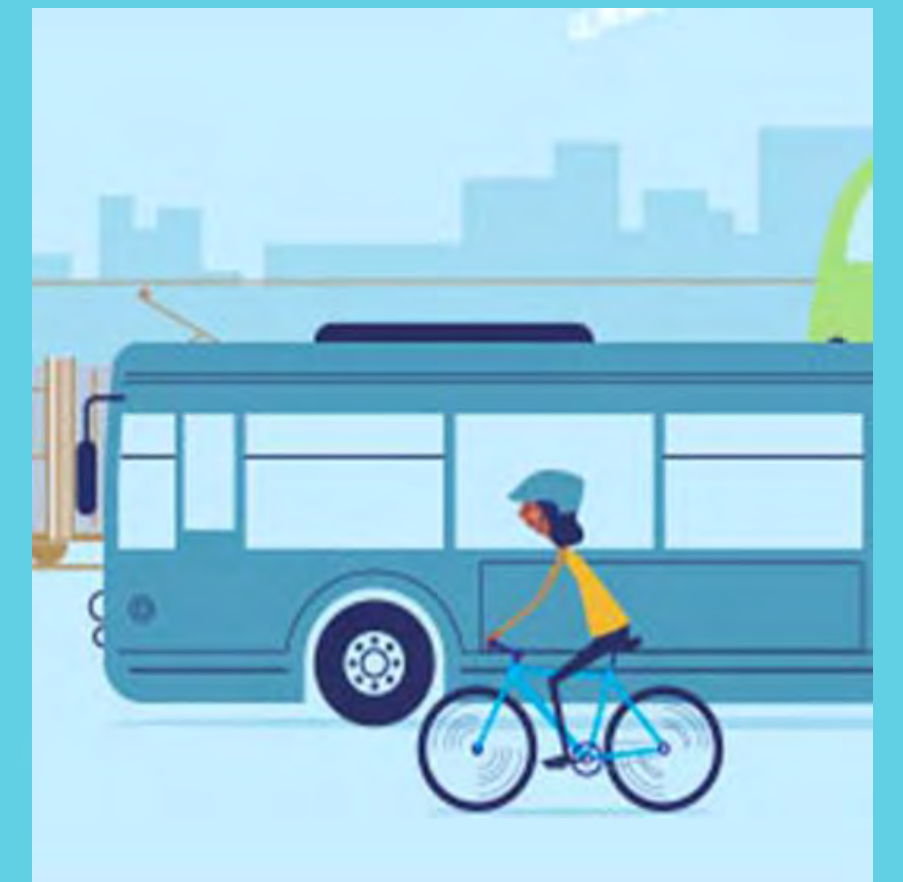
- Vary their route to work

Re-mode their commute

- Use a different form of travel i.e. tram / train / bus

Next steps

- Our B2B campaign will Go Live in the next couple of weeks
- Visit our webpages to explore how we can support your business
- Complete our baseline survey
- Utilise online and one-to-one support as necessary
- Link with our partners for bespoke, specialist advice
- Contact us to discuss creating a case study about your organisation
- Email: sustainable.journeys@tfgm.com



Any questions?